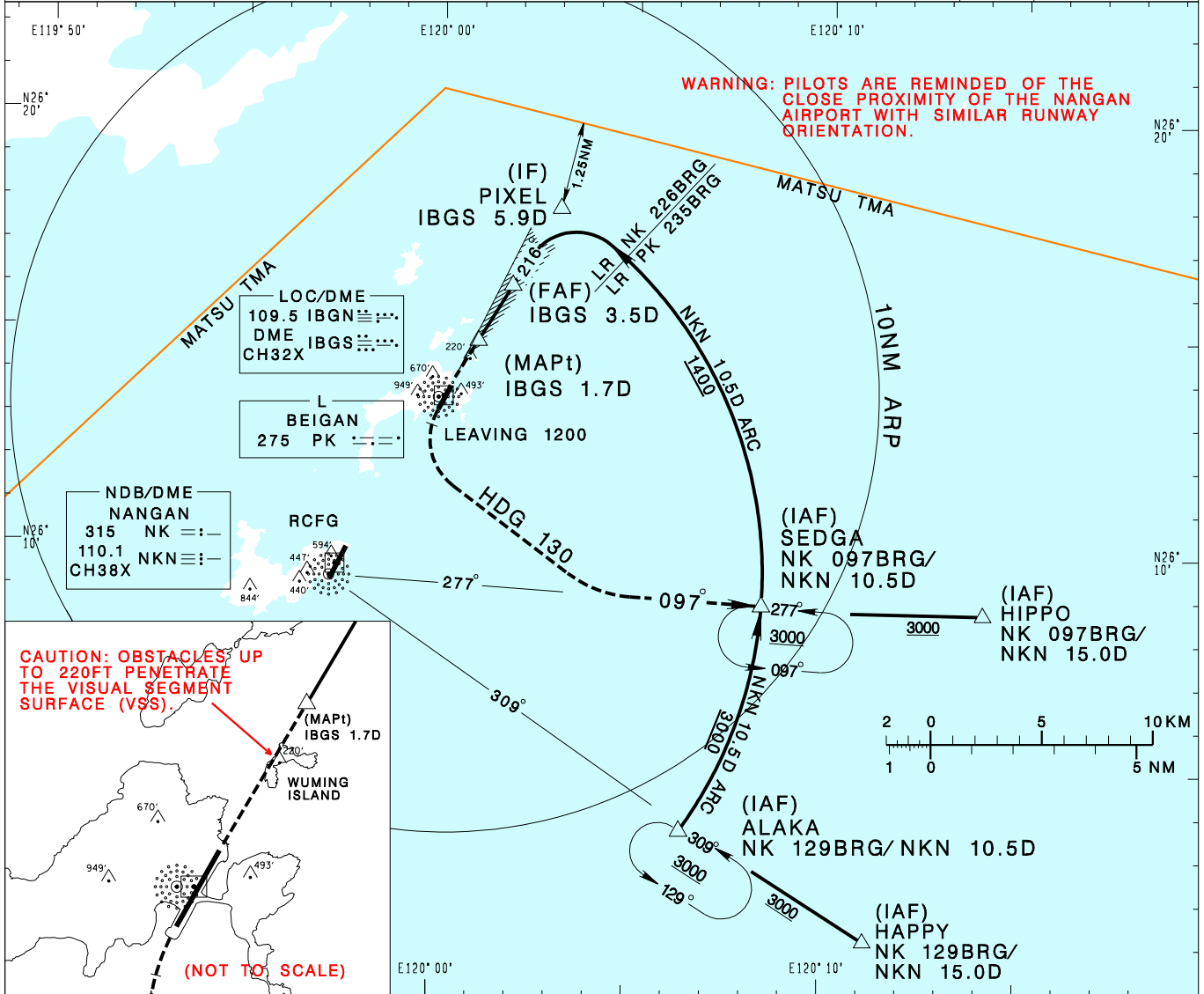


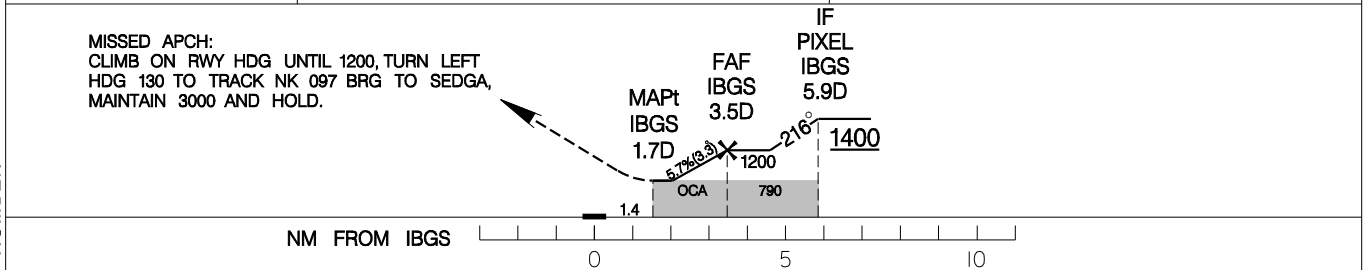
馬祖/北竿機場
MATSU/BEIGAN AD

RCMT
LDA RWY21

TAIPEI APP 121.0 122.3	BEIGAN TWR 118.65	ATIS 127.35	VAR 5° W - 2021 ↑ ↓	 MSA PK 25NM
Apt Elev: 41'	Rwy21 THR Elev: 41'	Trans Level: FL130		
BEARINGS ARE MAGNETIC; DISTANCES ARE NAUTICAL MILES; ELEVATIONS, HEIGHTS IN FEET				



DIST to IBGS	2.5DME	3DME
ADVISORY ALT	860	1030



MINIMA (OCA IN FT, VIS IN M, OCH IN FT)			NOTE 1. CAUTION HIGH TERRAIN NEAR THE AIRPORT. 2. CIRCLING NOT AUTHORIZED NORTHWEST OF AIRPORT. 3. THE FINAL APCH COURSE OFFSETS FROM RWY CENTERLINE EXTENSION BY 2.8 DEG, AND INTERSECTS AT 1400M FROM THR OF RWY21. 4. THE DISTANCE FROM IF TO THR21 IS 5.6NM. 5. LANDING ON RWY21 AT NIGHT IS PROHIBITED. 6. CAUTION: OBSTACLES UP TO 220FT PENETRATE THE VISUAL SEGMENT SURFACE (VSS). *DME REQUIRED.
CATEGORY	A	B	
STRAIGHT-IN MA CG 4.3% (262ft/NM) until 1200ft	790/2000 749	790/2400 749	
CIRCLING	1300/3600	1259	

CHANGES: NEW PAGE NUMBER